



49 Ynys Hir, Pontypridd, CF37 3JF
£230,000

Nestled in the tranquil cul-de-sac of Ynys Hir, Coed-Y-Cwm, this modern semi-detached house offers a perfect blend of comfort and convenience. With three well-proportioned bedrooms, including a delightful en-suite shower room, this property is ideal for families or those seeking extra space.

The house boasts three inviting reception rooms, providing ample space for relaxation, entertaining, or even a home office. The layout is thoughtfully designed to maximise both light and functionality, making it a welcoming environment for all who enter.

Situated within a popular residential development, this home is just minutes away from the bustling town centre, ensuring that all essential amenities are easily accessible. Whether you fancy a leisurely stroll or a quick trip to nearby park, the location is both peaceful and practical.

Additionally, the property includes off road parking, adding to the convenience of modern living. This semi-detached house is not just a home; it is a lifestyle choice, offering a serene retreat while remaining close to the vibrancy of town life.

This property is in a sought-after area, making it an excellent opportunity for those looking to settle in a friendly community. Do not miss the chance to make this charming house your new home.

Entrance Lobby

Double glazed entrance door and side panel, coved ceiling, laminated wood flooring, storage cupboard.

Sitting Room 16'11" x 7'11" max (5.18 x 2.43 max)



Double glazed french doors to front, double glazed window to side, radiator, laminated wood flooring, storage cupboard.

Living Room 16'3" x 14'6" max (4.96 x 4.43 max)



Double glazed window to front, two radiators, coved ceiling, laminated wood flooring, staircase to first floor, understairs recess.

Dining Room 8'10" x 8'6" (2.70 x 2.60)



Double glazed door and window to rear, radiator, coved ceiling, laminated wood flooring, open plan to kitchen.

Kitchen 8'10" x 7'2" (2.70 x 2.19)



Fitted base and wall cupboards with tiled splash backs, stainless steel sink unit, electric cooker point, space for washing machine and dishwasher, wall mounted gas combination boiler, double glazed window to rear.

First Floor Landing

Storage cupboard.

Bedroom 1 11'8" x 10'0" (3.58 x 3.05)

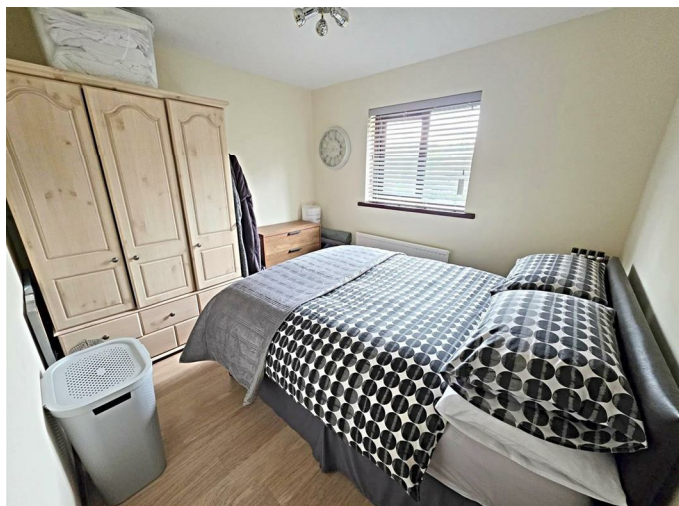


Double glazed window to front, radiator, laminated wood flooring.

En-Suite Shower Room

Tiled shower cubicle, wc, wash hand basin, window to side.

Bedroom 2 9'11" x 8'10" (3.04 x 2.70)



with electric shower, wc, wash hand basin, part tiled walls, radiator, window to front.

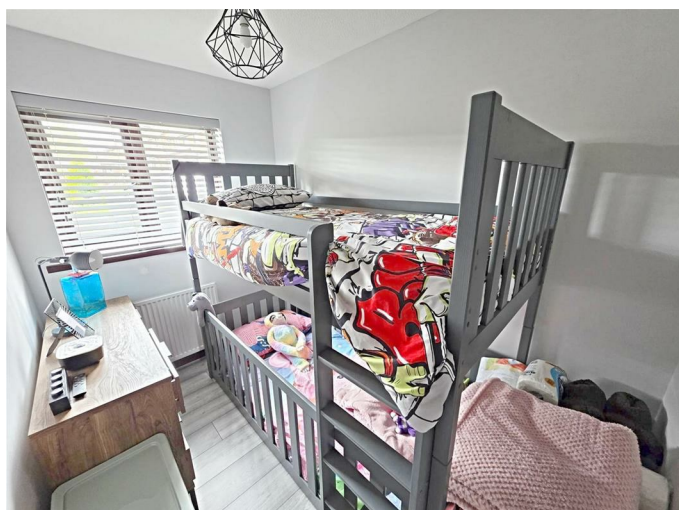
Outside



Open plan lawned front garden with off road parking. Enclosed garden to rear with paved patio, lawn and mature bushes.

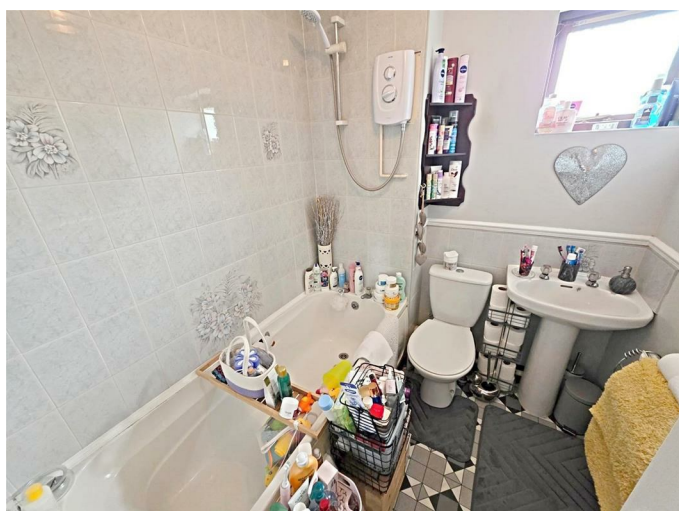
Double glazed window to rear, radiator, laminated wood flooring.

Bedroom 3 8'10" x 5'10" (2.70 x 1.80)



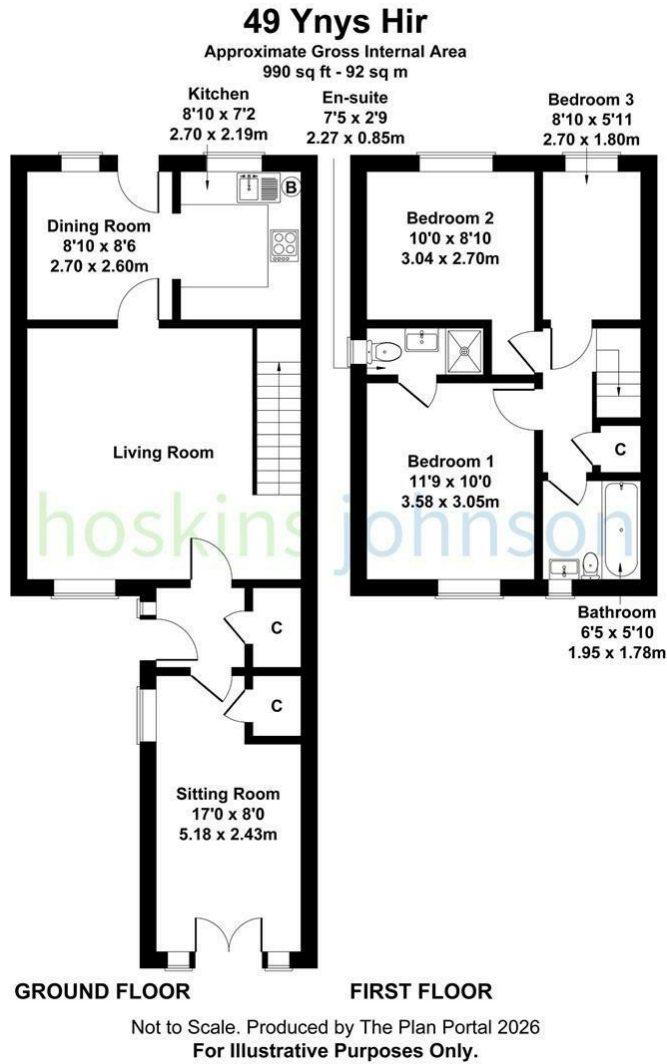
Double glazed window to rear, radiator, laminated wood flooring.

Bathroom

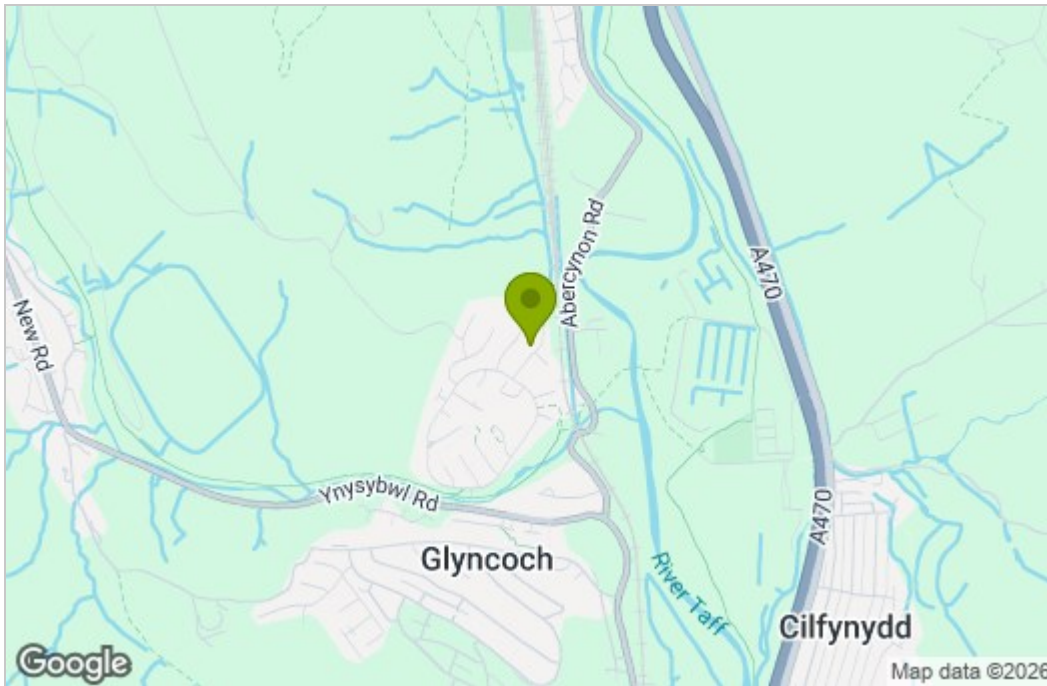


Three piece suite in white, comprising panelled bath

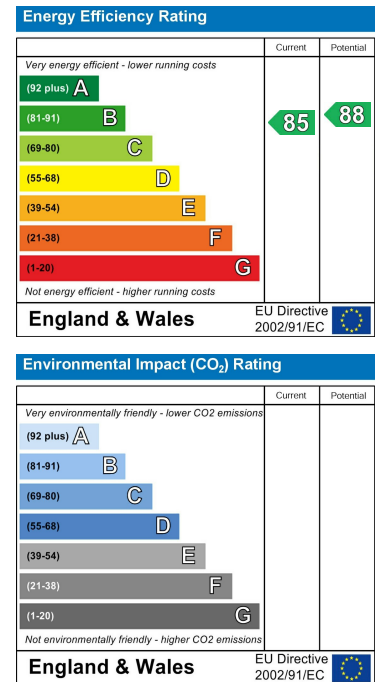
Floor Plan



Area Map



Energy Efficiency Graph



These particulars, whilst believed to be accurate are set out as a general outline only for guidance and do not constitute any part of an offer or contract. Intending purchasers should not rely on them as statements of representation of fact, but must satisfy themselves by inspection or otherwise as to their accuracy. No person in this firm's employment has the authority to make or give any representation or warranty in respect of the property.